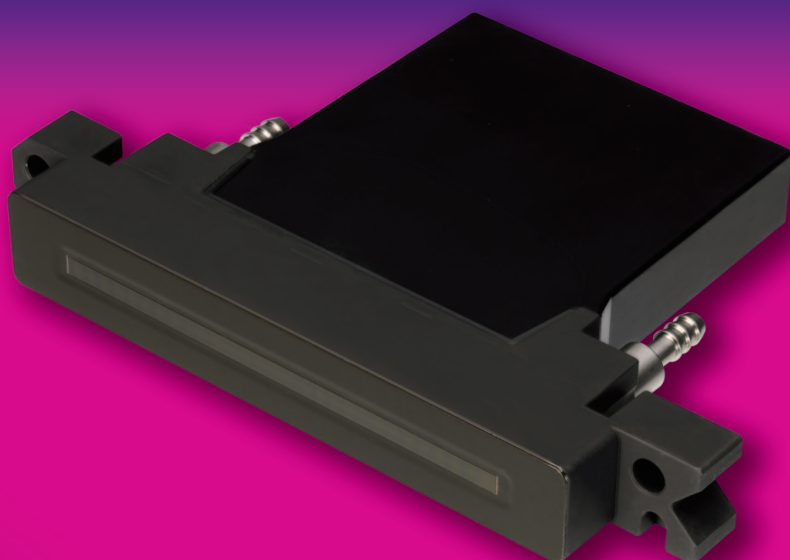
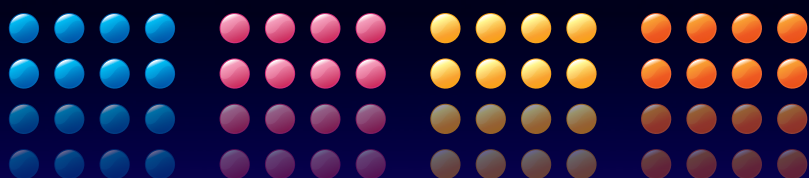


KONICA MINOLTA

# INKJET PRINTHEAD

## KM1024 Series

New 72mm-Wide Inkjet Printhead, Reducing Energy Consumption by 50%



**1024**  
Nozzles

**360**  
dpi

**6pl**  
Ink drop size

**14pl**  
Ink drop size

**42pl**  
Ink drop size

**72**  
mm  
Print width

**8**  
levels  
Grey scale

**Solvent**  
Ink

**UV**  
Ink



Giving Shape to Ideas

## ■ Main Features

### Major improvement in productivity by use of 1024 multi-nozzles and realization of wide print width of 72mm.

The unit is equipped with twice the number of nozzles mounted on the KM512 printhead, enabling the high density required to realize the 72mm print width. This increased width further enhances applicability to printing systems (e.g. Single-pass inkjet printers) that demand high productivity.

### Increased grey-scale levels produce richer tones and more subtle gradients making the printhead even more attractive to existing and new print applications.

Equipped with a new control IC, the KM1024 printhead can print up to a maximum of 8 drop sizes. This allows even greater control of the printed image resulting in smoother colour gradients and more precisely matched tones.

### We have added 42pl and 6pl droplet volumes to our lineup.

In order to support all kinds of industrial applications, we have added large-droplet (42pl) and small-droplet (6pl) types to our lineup. To satisfy our customers' needs and print applications, we offer capabilities ranging from high-definition to high-speed printing.

### The KM1024 is suitable for use in a diverse range of industrial printing applications.

The product range includes an integral heater and compatibility with solvent, UV and oil ink types.

### The KM1024 Series features environmentally considerate products ( With Green Product Approval\*).

Compared to the KM512 Series, the CO<sub>2</sub> emissions level during usage of the product has been reduced by approximately 50% thanks to the development of the low-capacitance actuator. In addition, the amount of petroleum-derived resources used has been reduced by approximately 20%. The product also features a slimmer printhead, lighter weight (approximately 20% less than the KM512 Series) and a footprint approximately 20% smaller.

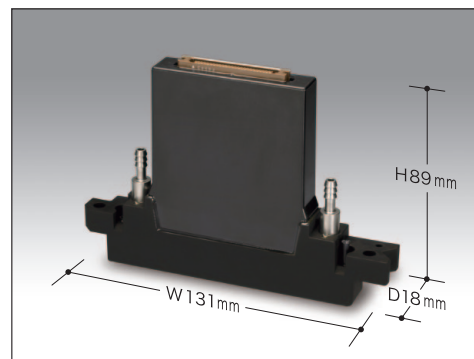
(The above data applies to the environmental performance of KM1024M (14pl).)

#### \*Concerning Green Product Approval

The Konica Minolta Group has launched the "Green Product Approval System" which is designed to evaluate products with outstanding environmental performance in accordance with original standards. Inkjet Printhead KM1024 is a product that has gained this system standard.



**Reduction in the CO<sub>2</sub> emissions level of approximately 50% during product usage**  
(Per-nozzle comparison with KM512)



## ■ Specifications

Printhead Name	KM1024SHB	KM1024MNB	KM1024MHB	KM1024LNB	KM1024LHB
Technology	Piezo Drop on Demand (Shared wall 3 cycle)				
Resolution	180dpi × 2lines = 360dpi				
Number of Nozzles	512nozzles × 2lines = 1024nozzles				
Nozzle Pitch	70.5μm (141μm 2lines)				
Drop Size	6pl	14 pl		42pl	
Max Frequency	30.0 kHz	12.8 kHz		6.7 kHz	7.6 kHz
Printing Width	72mm				
Dimensions	W131mm × D18mm × H89mm				
Weight	150g				
Grey scale	8 levels				
Internal Heater	○		○		○
Solvent Ink	○	○	○	○	○
UV Ink	○	△	○	△	○

\*Specifications above could be changed without any announcement.

# KONICA MINOLTA, INC.

## Inkjet Business Unit

No.1 Sakura-machi, Hino-shi, Tokyo 191-8511, Japan  
Tel: +81-42-589-3701 Fax: +81-42-589-3865

■ URL: <http://konicaminolta.com>

Recycled Paper H1304002B1E